

ECHOES OF THE REPUBLIC

THE ANKARA RADIO MUSEUM

Ankara Radio Museum is a project designed for the 100th anniversary of the republic in the "Tale Casino" building located in Ankara Youth Park. Since its establishment, Ankara Radio has stood out as a unique tool supporting the ideal of consolidating national unity and creating a common culture in society. The museum aims to present the importance of radio in the early republican period to visitors within a timeline. While making this presentation, the structure and external aesthetics of the radio which is the most important propaganda tool of the state, were taken as a design element and an attempt was made to create the feeling of walking inside the radio to the visitors.



SITE ANALYSIS

The second issue taken up to be solved within the framework of the Ankara Radio Museum is the location of the building. The site is located in the Tale Casino building in Ankara Youth Park. The site is located in the Tale Casino building in Ankara Youth Park. The site is located in the Tale Casino building in Ankara Youth Park.

Ankara Radio played a significant role in Turkey's modernization process during the Republic era by providing the public with news, entertainment and educational content. Radio also served as a significant tool for the design of the museum building in Ankara. The museum building is designed to reflect the architecture of the early republican period, with an emphasis on the use of modern materials and techniques. The building is designed to reflect the architecture of the early republican period, with an emphasis on the use of modern materials and techniques.

RADIO DIAL

The first building, opening from the architecture of Ankara Radio is to be made in the form of a radio dial, which is the most important element of the radio. The building is designed to reflect the architecture of the early republican period, with an emphasis on the use of modern materials and techniques.

SPEAKER

The speaker, which is the most important element of the radio, is designed to reflect the architecture of the early republican period, with an emphasis on the use of modern materials and techniques.

BUTTON

The button, which is the most important element of the radio, is designed to reflect the architecture of the early republican period, with an emphasis on the use of modern materials and techniques.

With the use of these elements, the building is designed to reflect the architecture of the early republican period, with an emphasis on the use of modern materials and techniques.



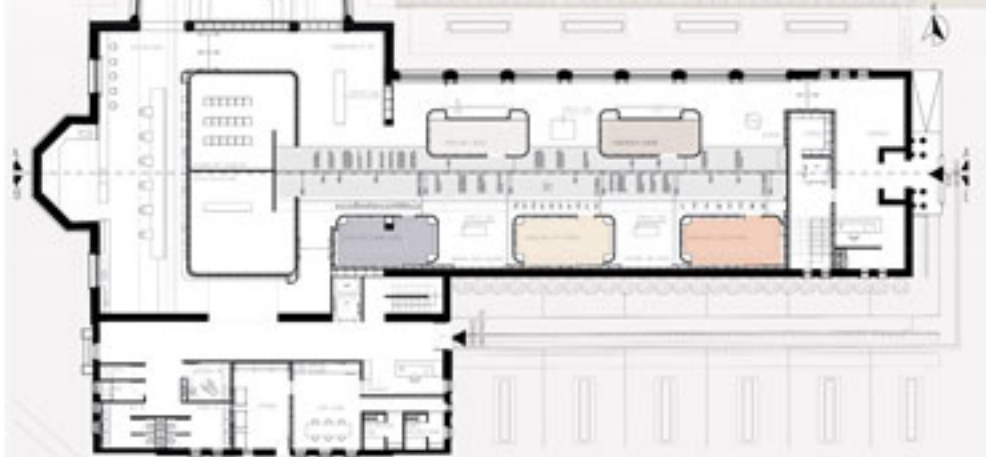
VISUAL ORGANIZATION
The visual organization of the building is designed to reflect the architecture of the early republican period, with an emphasis on the use of modern materials and techniques.

CONCEPT DEVELOPMENT
The concept development of the building is designed to reflect the architecture of the early republican period, with an emphasis on the use of modern materials and techniques.

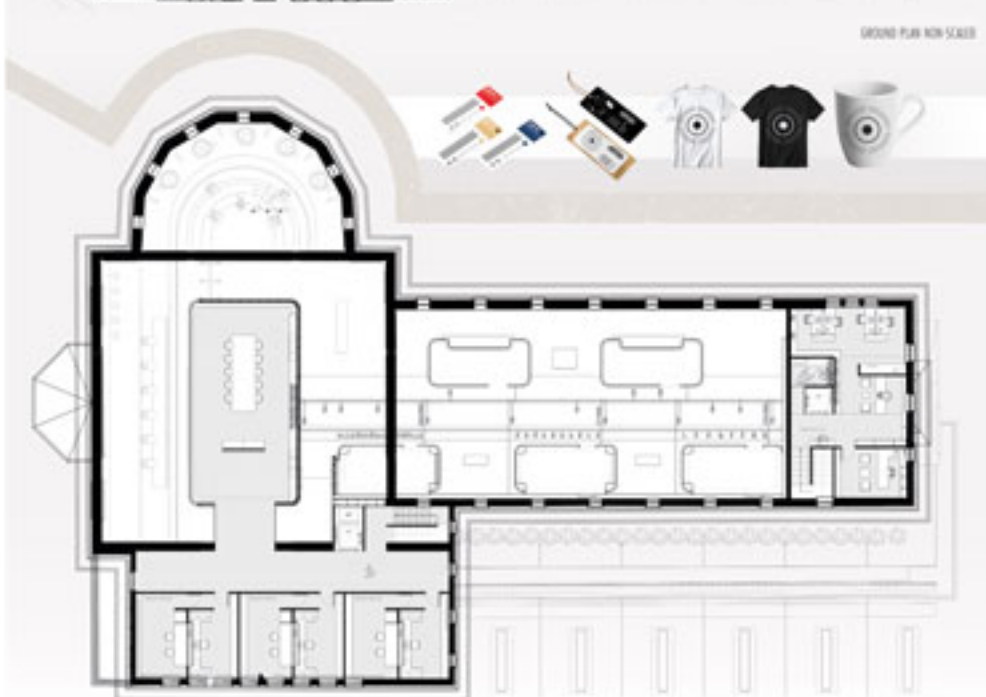
DESIGN AND ENVELOPE
The design and envelope of the building is designed to reflect the architecture of the early republican period, with an emphasis on the use of modern materials and techniques.



- ARCHITECTURAL DESIGN**
 - 1. THE ARCHITECTURE
 - 2. THE FORM
 - 3. THE MATERIALS
 - 4. THE COLOR
 - 5. THE LIGHT
 - 6. THE SOUND
 - 7. THE TOUCH
 - 8. THE SMELL
 - 9. THE TASTE
 - 10. THE FEELING
- ARCHITECTURAL CONCEPT**
 - 1. THE ARCHITECTURE
 - 2. THE FORM
 - 3. THE MATERIALS
 - 4. THE COLOR
 - 5. THE LIGHT
 - 6. THE SOUND
 - 7. THE TOUCH
 - 8. THE SMELL
 - 9. THE TASTE
 - 10. THE FEELING
- ARCHITECTURAL STYLE**
 - 1. THE ARCHITECTURE
 - 2. THE FORM
 - 3. THE MATERIALS
 - 4. THE COLOR
 - 5. THE LIGHT
 - 6. THE SOUND
 - 7. THE TOUCH
 - 8. THE SMELL
 - 9. THE TASTE
 - 10. THE FEELING
- ARCHITECTURAL FORM**
 - 1. THE ARCHITECTURE
 - 2. THE FORM
 - 3. THE MATERIALS
 - 4. THE COLOR
 - 5. THE LIGHT
 - 6. THE SOUND
 - 7. THE TOUCH
 - 8. THE SMELL
 - 9. THE TASTE
 - 10. THE FEELING
- ARCHITECTURAL MATERIALS**
 - 1. THE ARCHITECTURE
 - 2. THE FORM
 - 3. THE MATERIALS
 - 4. THE COLOR
 - 5. THE LIGHT
 - 6. THE SOUND
 - 7. THE TOUCH
 - 8. THE SMELL
 - 9. THE TASTE
 - 10. THE FEELING
- ARCHITECTURAL COLOR**
 - 1. THE ARCHITECTURE
 - 2. THE FORM
 - 3. THE MATERIALS
 - 4. THE COLOR
 - 5. THE LIGHT
 - 6. THE SOUND
 - 7. THE TOUCH
 - 8. THE SMELL
 - 9. THE TASTE
 - 10. THE FEELING
- ARCHITECTURAL LIGHT**
 - 1. THE ARCHITECTURE
 - 2. THE FORM
 - 3. THE MATERIALS
 - 4. THE COLOR
 - 5. THE LIGHT
 - 6. THE SOUND
 - 7. THE TOUCH
 - 8. THE SMELL
 - 9. THE TASTE
 - 10. THE FEELING
- ARCHITECTURAL SOUND**
 - 1. THE ARCHITECTURE
 - 2. THE FORM
 - 3. THE MATERIALS
 - 4. THE COLOR
 - 5. THE LIGHT
 - 6. THE SOUND
 - 7. THE TOUCH
 - 8. THE SMELL
 - 9. THE TASTE
 - 10. THE FEELING
- ARCHITECTURAL TOUCH**
 - 1. THE ARCHITECTURE
 - 2. THE FORM
 - 3. THE MATERIALS
 - 4. THE COLOR
 - 5. THE LIGHT
 - 6. THE SOUND
 - 7. THE TOUCH
 - 8. THE SMELL
 - 9. THE TASTE
 - 10. THE FEELING
- ARCHITECTURAL SMELL**
 - 1. THE ARCHITECTURE
 - 2. THE FORM
 - 3. THE MATERIALS
 - 4. THE COLOR
 - 5. THE LIGHT
 - 6. THE SOUND
 - 7. THE TOUCH
 - 8. THE SMELL
 - 9. THE TASTE
 - 10. THE FEELING
- ARCHITECTURAL TASTE**
 - 1. THE ARCHITECTURE
 - 2. THE FORM
 - 3. THE MATERIALS
 - 4. THE COLOR
 - 5. THE LIGHT
 - 6. THE SOUND
 - 7. THE TOUCH
 - 8. THE SMELL
 - 9. THE TASTE
 - 10. THE FEELING
- ARCHITECTURAL FEELING**
 - 1. THE ARCHITECTURE
 - 2. THE FORM
 - 3. THE MATERIALS
 - 4. THE COLOR
 - 5. THE LIGHT
 - 6. THE SOUND
 - 7. THE TOUCH
 - 8. THE SMELL
 - 9. THE TASTE
 - 10. THE FEELING



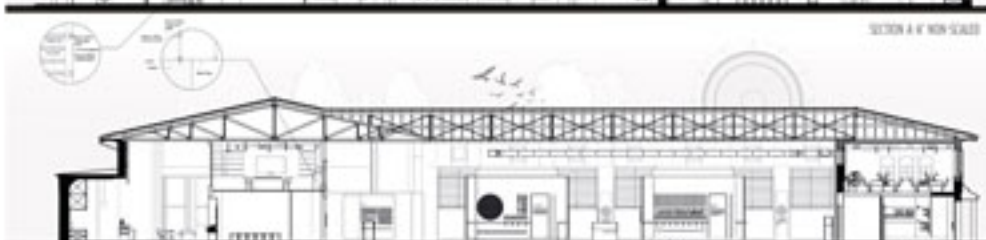
GROUND FLOOR NON SCALE



SECOND FLOOR NON SCALE



SECTION A-A NON SCALE



SECTION B-B NON SCALE



