

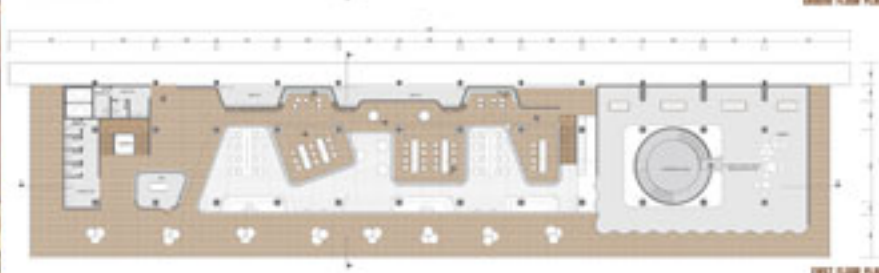
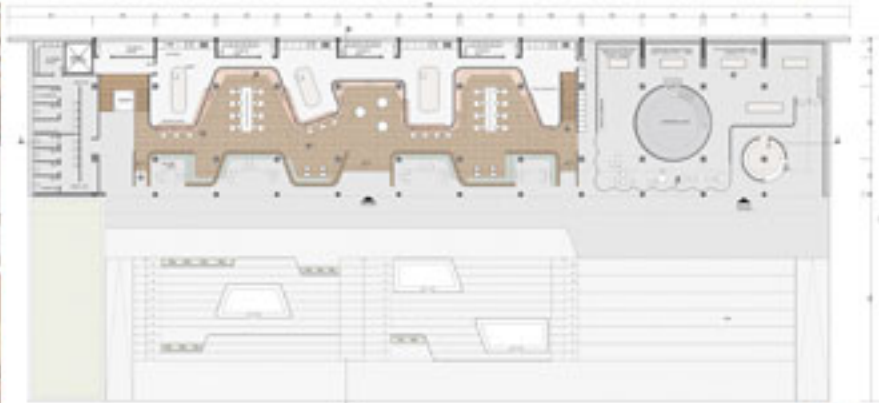
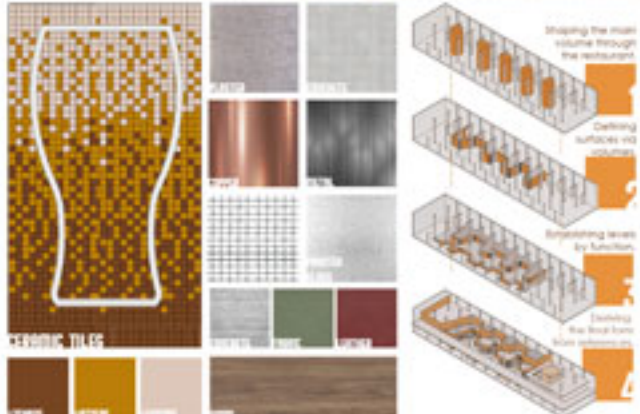
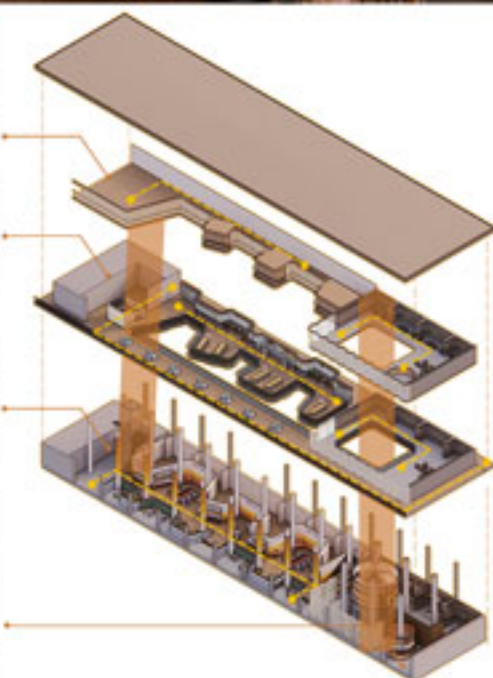


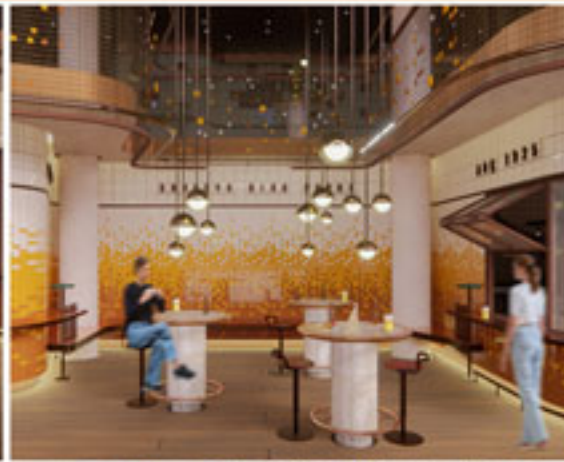
The third floor is designed to provide a more private and focused working environment, clearly separated from the public layers of the building to ensure exclusivity and concentration. It includes individually enclosed rooms with enhanced acoustic control and visual privacy, supporting uninterrupted workflow and strategic thinking. In addition, the board of directors' offices are carefully positioned to maintain discretion while allowing efficient internal communication, reinforcing a calm and professional atmosphere dedicated to high-level administrative functions.

This floor establishes a direct connection with **Bayandi Street** functioning as an accessible public park extension for the surrounding Bayandi context, while continuing the spatial language of the lower level however, rather than accommodating service functions, it is dedicated entirely to seating areas and shared spaces where people can gather, spend time together, and rest, with the parklets defined in the ground floor plan and the informal sitting and relaxation zones seamlessly extending onto the first floor to maintain spatial and social continuity.

Ground floor serves as the primary public area of the building, bringing together a vibrant selection of street food options inspired by **Ankara's local flavors**, creating a lively and inviting social atmosphere. The space is articulated through a series of distinct pockets and differentiated seating arrangements, that respond to various use preferences, ranging from more intimate corners to communal tables, thereby encouraging both individual privacy and collective experiences while celebrating the culture of **Ankara's street cuisine** within a dynamic and layered spatial setting.

The museum is conceived as a dedicated and immersive area within the space, extending vertically from the entrance floor up to the second floor and is structured to offer a layered exhibition experience that unfolds progressively as visitors move upward. It presents a curated narrative centered on beer culture, with a particular emphasis on **Ankara Beer** and its historical development, highlighting its significance within the social and industrial memory of the city. Alongside informative displays and archival elements, the museum incorporates an interactive experience zone that encourages active engagement, allowing visitors not only to observe but also to explore the production process, cultural rituals, and evolving identity of beer in Ankara through a dynamic and participatory spatial journey.





SERVICE AREA
Interior service areas feature ceramic surfaces inspired by beer, using bubble-like forms to create identity and enhance the overall sensory experience.



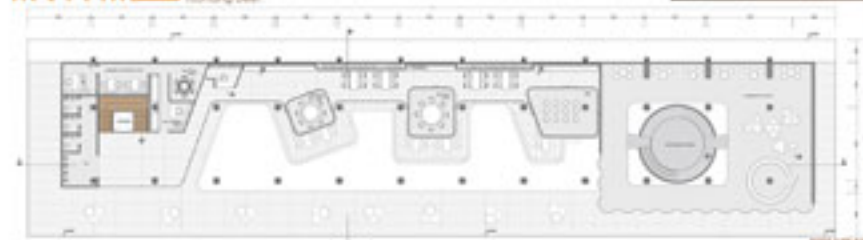
On the **Bayındır Beer Park**, interior and exterior niches are designed to emphasize the aesthetic language of the **Beer Park** concept. These pockets enhance the spatial character while providing intimate seating and waiting areas, encouraging social interaction and momentary pauses within the flow of the space. Integrating semi-enclosed zones, the design blurs boundaries between circulation and rest, creating layered experiences where movement and pause co-exist seamlessly. The careful arrangement of these niches, combined with varied seating typologies and subtle material contrasts, fosters a dynamic yet relaxed atmosphere, inviting visitors to explore, linger, and engage with both the architectural environment and one another in a continuous interplay of social and spatial experiences.

BAYINDIR BEER PARK



Unlike the other areas, the museum functions as a distinct and self-contained space. While the surrounding zones remain open or semi-open and encourage constant social interaction, the museum offers a more exclusive environment with controlled access during specific hours. Within its boundaries, exhibition zones narrate the history and production of beer, representing milestones such as the Anadolı, Osman Çiragi (ADC) Brewery and Sakarya Beer Park, highlighting the **cultural and industrial heritage** of brewing in Turkey. Alongside these displays, an experience area, a lounge, and a souvenir shop extend the visitor journey from observation to participation. To ensure fluid and momentary continuity, ceramics are used as key exhibition elements, while a hand-shaped brewing vessel extends through all three floors in a central feature that allows visitors to experience the space through a "Beer bubble" aesthetic. This vertical and immersive element embodies the essence of the **Beer Park** concept, merging spatial experience with narrative identity. Through this layered approach, the museum becomes both a place of learning and a sensory exploration of the culture surrounding beer.

BEER MUSEUM



TECHNICAL DRAWINGS

