



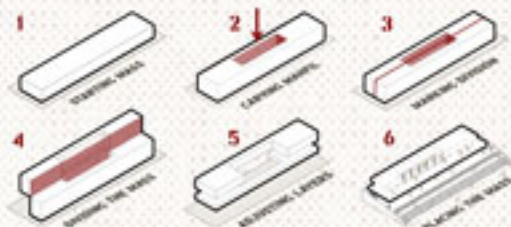
MAHFIL

Ankara's Literary Culture

This project seeks to revive Ankara's literary culture by transforming a public space into a hub for secondhand bookstores and intellectual exchange. A modular system of bookshops on the ground floor surrounds a central amphitheater that hosts discussions and spontaneous gatherings. Above, a public tea garden terrace offers an inclusive space for relaxation and interaction. The top level houses a library and offices, supporting research and community engagement.

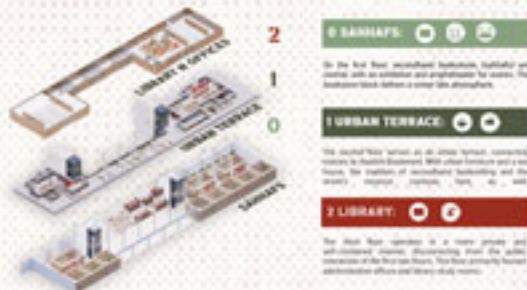


CONCEPT DEVELOPMENT



The core of the project centers on the idea of a 'mahfil mahfil'—a spatial and cultural atmosphere that fosters gathering, dialogue, and contemplation. This void is not merely an absence but an intentional presence, a layered-out space that forms the heart of the design. Architectural elements—bookstore modules, amphitheater seating, terraces, and circulation paths—are all organized around it, reinforcing its role as a contemporary take on traditional literary mahfils.

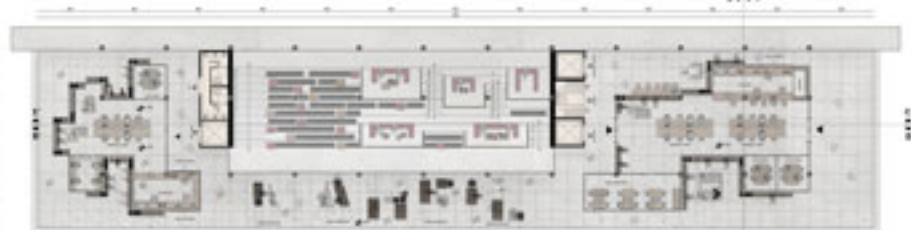
PROGRAMMATIC DIAGRAM



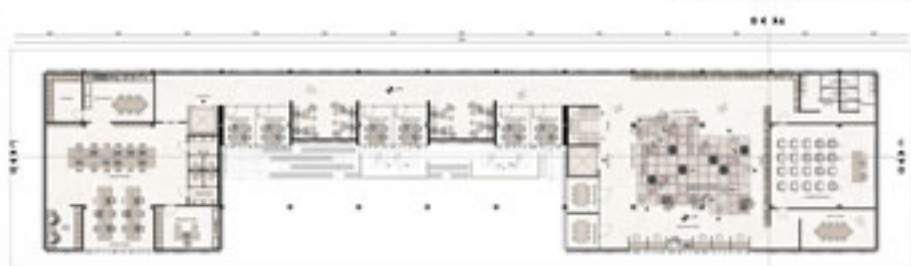
MASS DIAGRAM & MATERIAL BOARD



GROUND FLOOR PLAN UNSCALED



MEZZANINE FLOOR PLAN UNSCALED

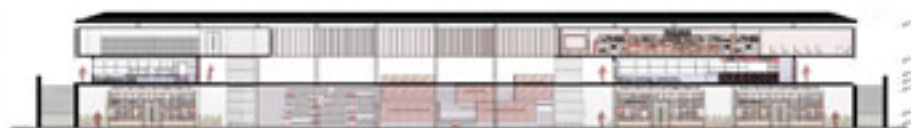


SECOND FLOOR PLAN UNSCALED



A-A SECTION UNSCALED

B-B SECTION UNSCALED



C-C SECTION UNSCALED



FRONT ELEVATION UNSCALED

MODULE S3:03 VARLIK



VARLIK SAHAF: FRONT VIEW



VARLIK SAHAF

MODULE S1:04 SEVGI SOYSAL



YENISEHIR SAHAF: FRONT VIEW



YENISEHIR SAHAF: CLOSE-UP



SAHAF'S INSIDE



SAHAF'S CORRIDOR

MODULE: AMPHITHEATER

This typographic design was applied onto certain panels, where letters interweave and interact fluidly without relying on a fixed grid system. The composition avoids strict linear order instead for overlapping elements that remain visually coherent and easy to comprehend. Instead of structural elements, the composition embraces overlapping forms that maintain legibility while suggesting motion and rhythm.

The use of color adds both a tactile dimension to the typographic, allowing shadows and natural light to subtly shift its visual weight throughout the day. The interplay of type and material creates a dynamic dialogue between performance and experience, echoing the existing texture of language and space.



SEVGI SOYSAL
YENISEHIR SAHAF
VARLIK SAHAF
MOUNTAIN FURNITURE
URBAN FURNITURE
TEA HOUSE
LIBRARY OFFICES



AMPHI: SIDE VIEW



AMPHI: FRONT VIEW

MODULE F1: URBAN FURNITURES



This urban furniture piece is designed as a modular system combining seating patterns and integrated planters. The composition takes inspiration from the fragmented forms of the word "MAHFILE" where selected letter parts are deconstructed and reassembled as spatial elements. These typographic fragments are arranged and positioned in a way that they both define the form of the furniture and subtly suggest the original word without compromising its own legibility.



URBAN FURNITURE



TEA HOUSE: INSIDE



URBAN FURNITURE 'A'



TEA HOUSE: INSIDE

MODULE F2: LIBRARY FURNITURE

This specially designed library furniture, created for the Mardin projects library area, contributes to the space's contemplative and communal character. Inspired by the silhouette of a stacked book, its layered structure synthesizes both a connection to nature and a metaphor for interdisciplinary education. It also echoes the cultural and historical layers embedded within the Mardin fabric.



MOUNTAIN FURNITURE



MOUNTAIN: CLOSE-UP



LIBRARY OFFICES

VARLIK DERGISI

1 9 3 3

VARLIK

SEVGI SOYSAL

YASAR NABI NAYIR

SEVGI SOYSAL

SEVGI SOYSAL

11 99

37 66

YAPRAK DERGISI

ILK BASKI

11 99

24 30

YAPRAK DERGISI

11 YAKUP 99 KADRI

24 30

ESERLER

AHMET HAMDİ TANPINAR

ESERLER