

# collect.

Balat is one of the richest region of Istanbul with it's socio-cultural structure and historical memory. The main essence of **collect.** is inspired by how and what way the past is transferring to the present.

Mezat culture is still strong in Balat. People came across from other regions to witness antiques and **object with it's own history.** Inspired from Balat's historical Mezat culture, collect is a a collective co-living and co-working space for **craftsman and local people** of Balat, where they transfer their experience to each other.

This historical building, which was used as a school in the past, now carries the old craftsmanship that has been forgotten and is used as a school again.

**Khorenyan Primary School**

## USER PROFILE

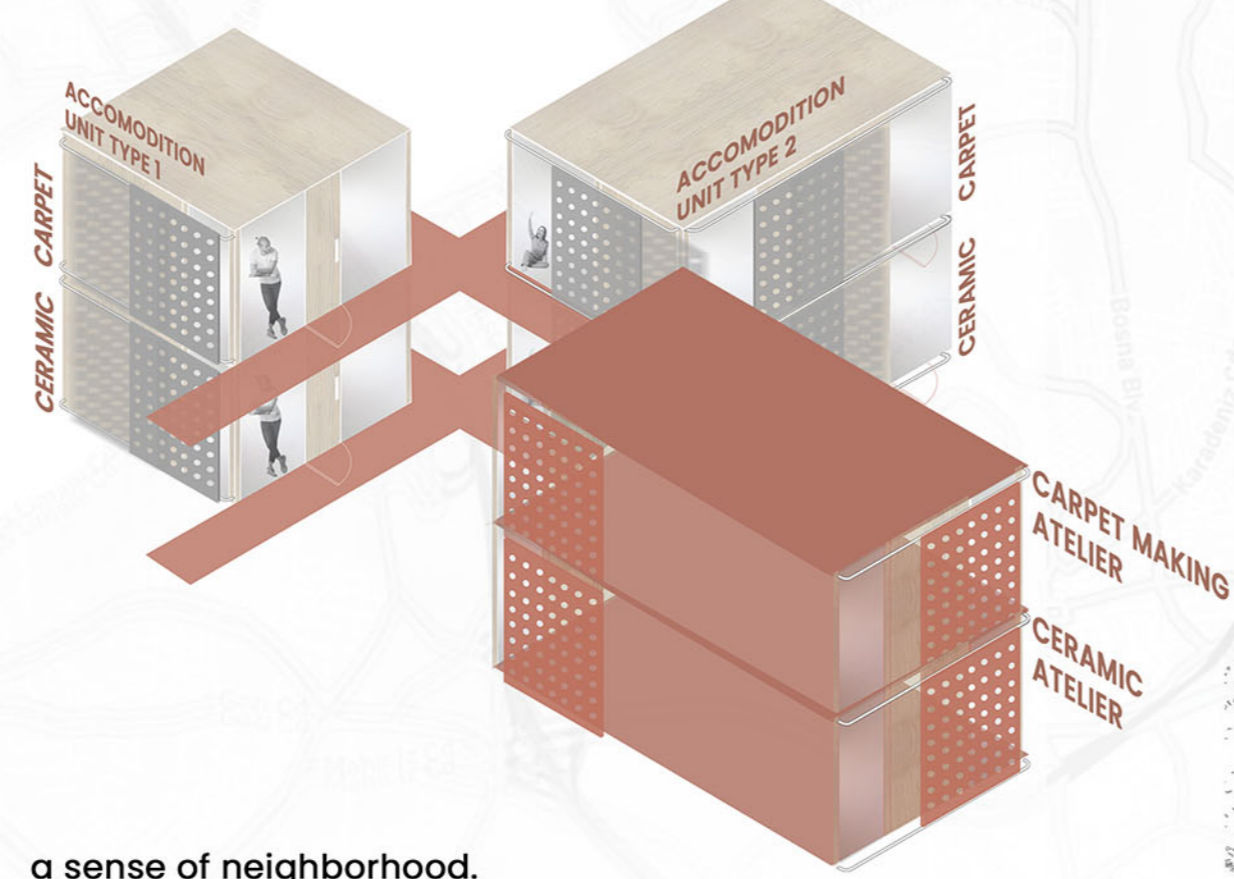
**Youth of Balat**  
-Getting educated by craftsmen and learning art and history.  
-Staying here for 11 months.

**Antiquees**  
-Learning old craftsmanship techniques by craftsmen with workshops.

**Çırak / Kalfa**  
-Antique repairing  
-selling the repaired antiques.

**Usta**  
-Educating youth of Balat with teaching them craftsmanship

## CONCEPTUAL COLLAGE



**a sense of neighborhood.**  
Different tenants use different accommodation units, which resembles their *personal houses*, they can open their windows or curtains and easily can interact with each other like being in a neighborhood.

Each workshop have their own accommodation unit near them, for example, ceramic ateliers have directly connected to the accommodation units that only can be use by ceramic craftsmen.

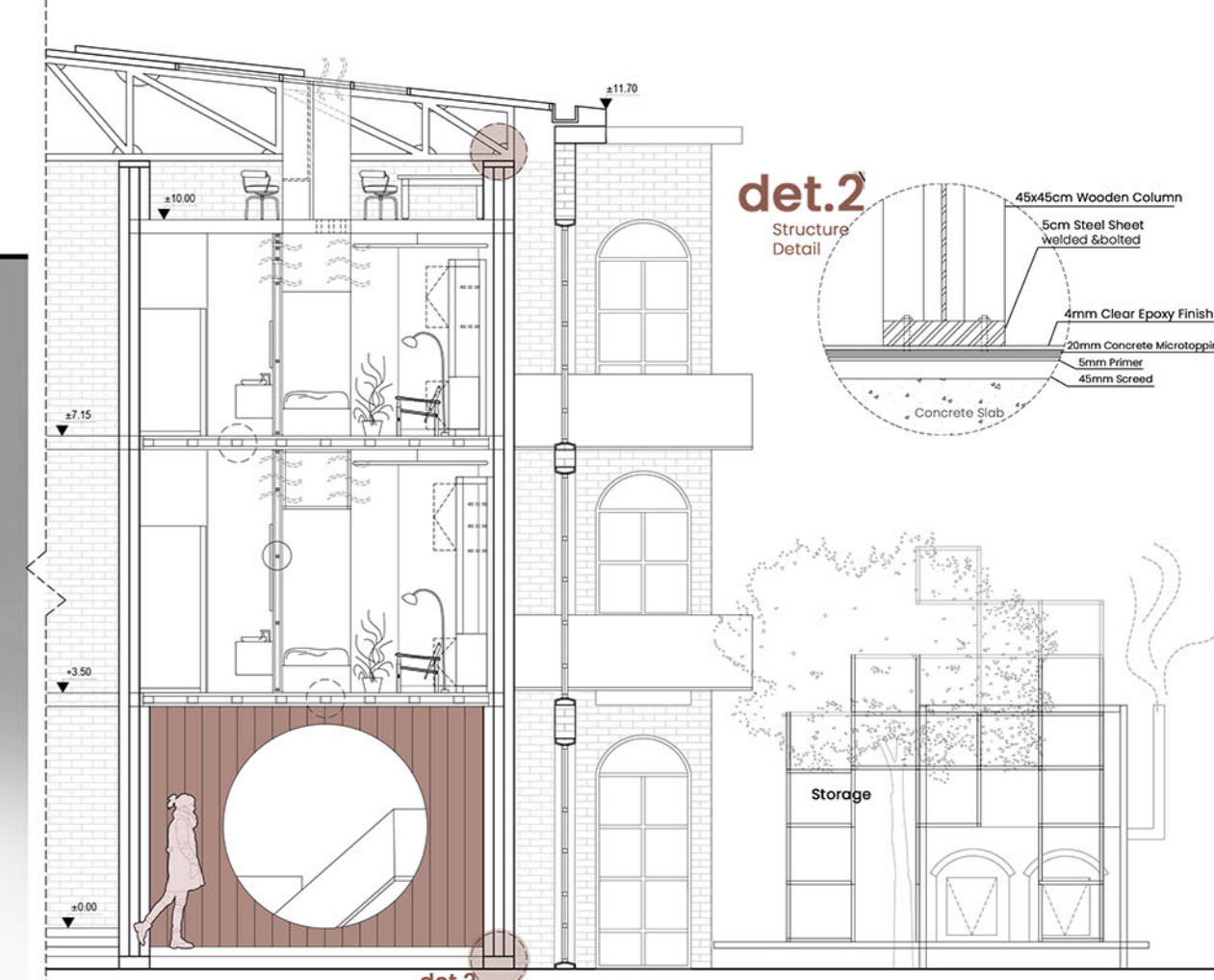
SECTION AA SCALE:1/100



SECTION BB SCALE:1/100



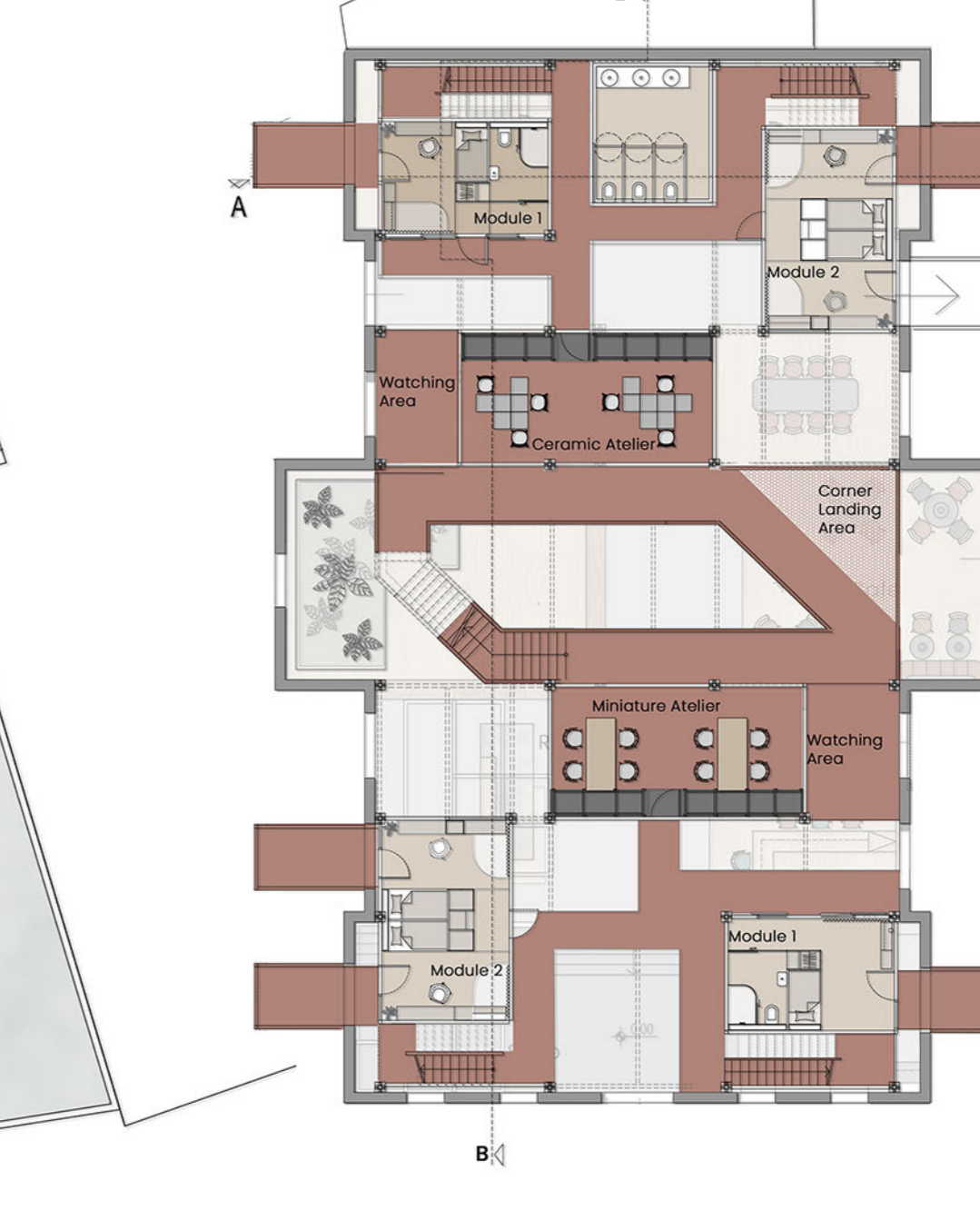
SYSTEM SECTION



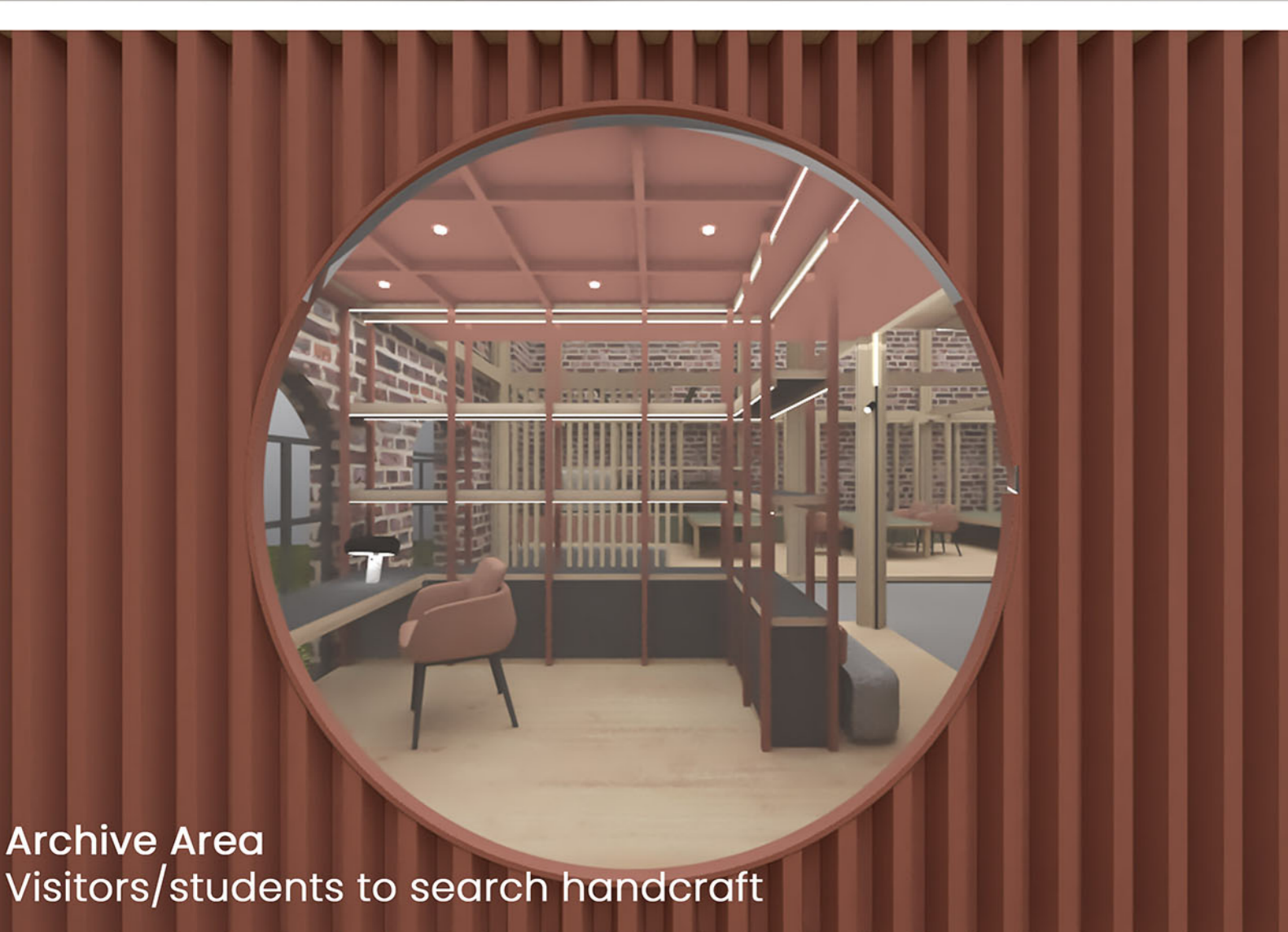
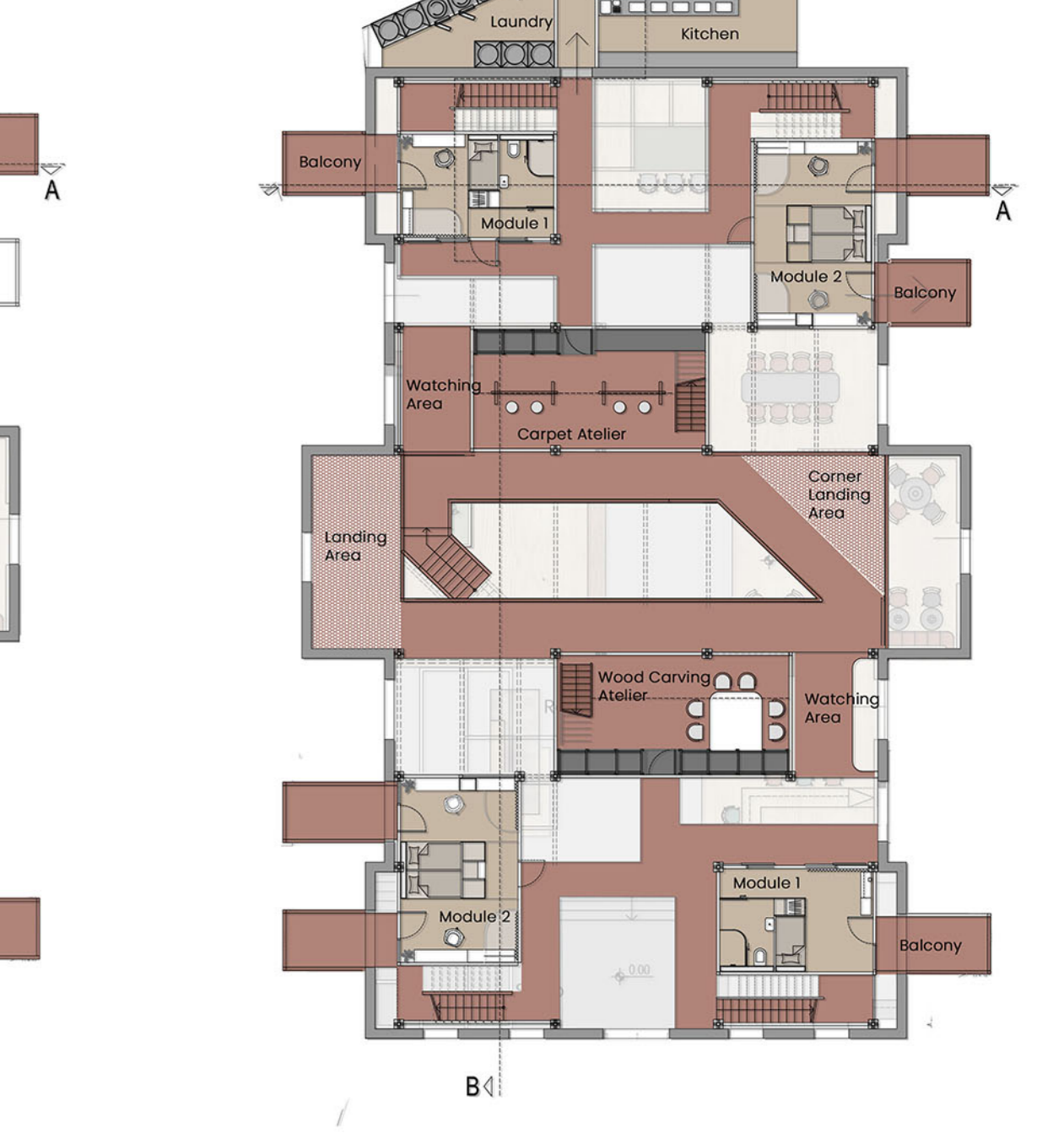
GROUND FLOOR PLAN Scale:1/100



FIRST FLOOR PLAN Scale:1/100



SECOND FLOOR PLAN Scale:1/100



Archive Area  
Visitors/students to search handcraft



Cafe  
Providing a space in free time of visitors and tenants of building



Workshop Area



Temporary Accomodation Units



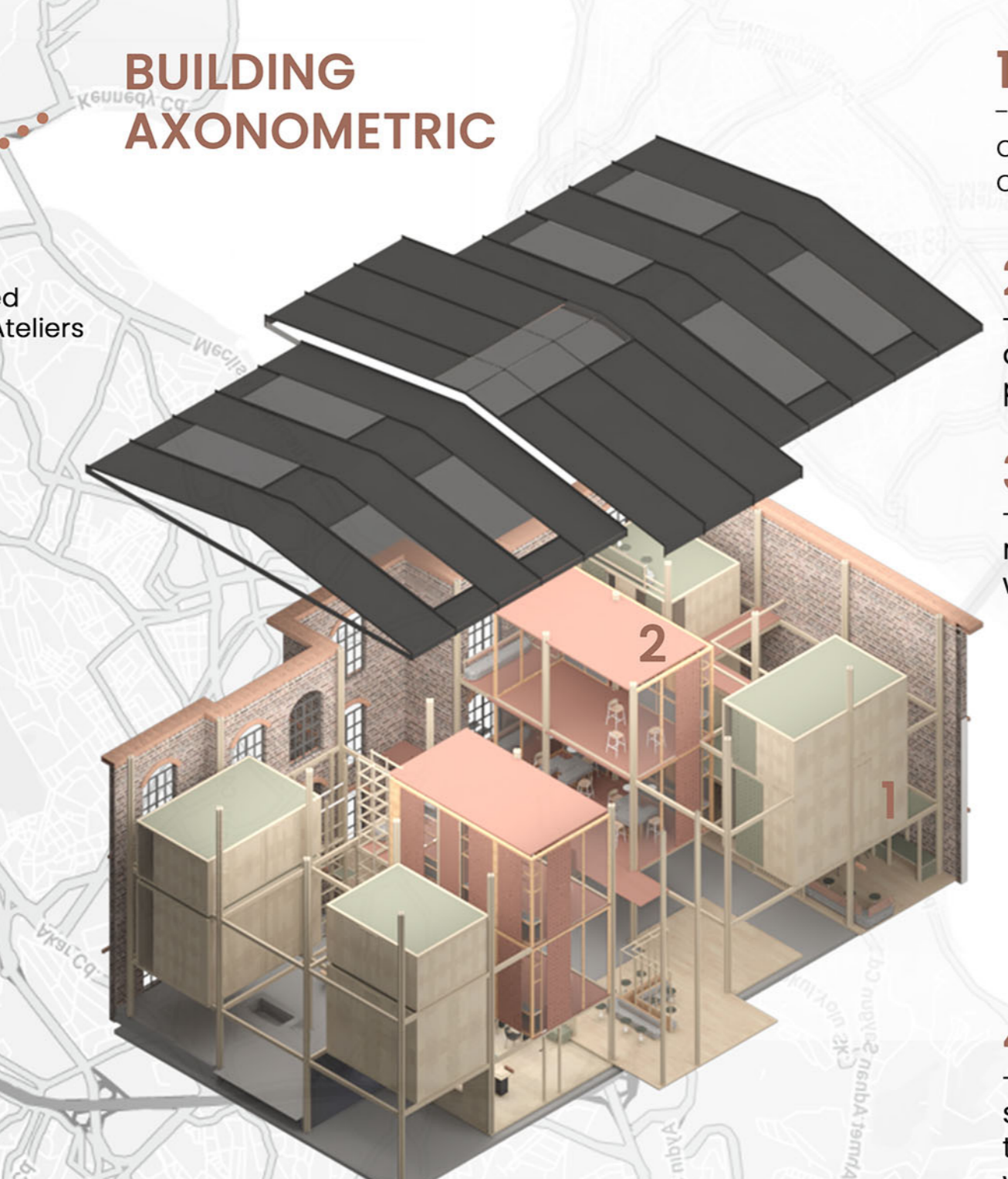
MEZAT Area/  
Auction of the handcrafts

### MOOD BOARD

historic, craftsmanship, collective living, habitat, Perforated Mesh in Ateliers, Living Spaces, modern

### MATERIAL BOARD

social spaces, private spaces



- 1.ACOMMODATION UNITS**  
-Two types of accomodation units double and single. Providing tenants to temporary accomodation.
- 2.ATELIERS**  
-Where professionals such as Usta, Çırak and Kalfa work together and create unique pieces
- 3.THE STRUCTURE**  
-The wooden structure supported with a metal profile. Dimension is 45x45cm, each wooden column is 15x15cm.
- 4.METAL ROOFING**  
-The metal roof is supported by wooden structure. Openings are positioned above the accomodation units and above the walking axis.

